

Dual Beam S-Band Satcom Antenna Array

This antenna is part of our range of antenna arrays, covering L through Ka-Band. We offer COTS antennas along with the capability to rapidly develop custom solutions tailored to meet specific requirements.

Application

- This antenna array generates two beams that are aligned in the x-plane and point 15° either side of the z-axis in the y-plane of the array.
- The antenna is used to simultaneously receive signals from 2 geostationary satellites that are positioned in different slots.
- The 36 element version of this array consists of 6 by 6 elements. Circular polarization is excited inside the radiating elements. Two individual feeding networks excite two beams.

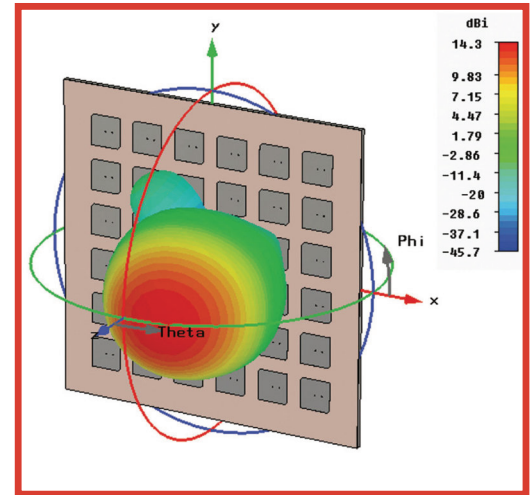
Options

- Different frequency ranges
- Higher gain
- LHCP
- Integrated LNA

Key Features

- 6 by 6 element Antenna Array
- Dual beam
- Operates at S-Band
- Circularly polarized
- Truncated-corner patch elements excite RHCP
- Low side lobe level
- High front-to-back ratio
- Dual feed network with individual connections for each beam
- High isolation between port connections
- Elements are grounded for protection against static discharges

Electrical Specifications	
Frequency range	S-Band
Operating temperature range	-40°C to +70°C, -40°F to +158°F
Gain	14dBi each beam
-3 dB beamwidth	34 degrees, each beam
Mechanical Specifications	
Dimensions	350 x 350mm
Weight	0.5kg

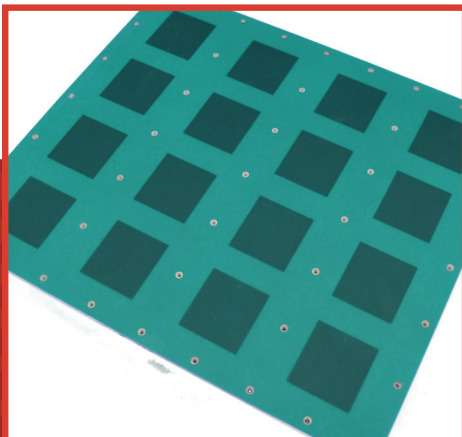


About us

Orban Microwave, founded in 1996, designs and manufactures advanced antennas and RF subsystems for space, radar, GNSS, and avionics applications.

We deliver high-quality, reliable, and efficient solutions supporting military, commercial, and industrial missions.

Our portfolio includes antenna arrays, AESA systems, wideband and omnidirectional antennas, quadrifilars, and a range of RF products such as T/R modules, power amplifiers, low-noise amplifiers, transponders, and RF switches.



Contact us for more information

Orban Microwave, Inc.
 11333 Lake Underhill Road
 Suite 104
 Orlando FL, 32825
 321-200-0080

